



SEDAN

ELECTRIC VEHICLE

GITICONTROL SERIES

# GitiSport GTR3

The GitiSport GTR3 is a track day tire designed for driving enthusiasts who demand race-inspired performance with street legality.

RIM SIZE

18 - 20"

ASPECT RATIO

30 - 35"

SPEED RATING

W - (Y)



EXCEPTIONAL HANDLING



PRECISE CONTROL



## TIRE FEATURES

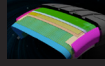
### COMPOUND DERIVED FROM MOTORSPORTS



#### ENHANCED MATERIAL PERFORMANCE

Specially designed compound mix for motorsports. Formulated to strike a balance between racetrack performance and everyday usability.

### PRECISE HANDLING



#### STRENGTHENED CASING STRUCTURE

Reinforced with Rayon and Aramid materials. Maintains casing structure stability across varying speed. High-Speed superb stability.

### HIGHER LATERAL G FORCE RESISTANCE



#### HIGHER LATERAL G FORCE RESISTANCE

Able to withstand High Lateral G Forces generated during turning, while maintaining stability and enhancing braking performance.

### SUPER FLAT CONTOUR



#### SUPERB TIRE-ROAD CONTACT OPTIMIZED PRESSURE DISTRIBUTION

Enhanced steering precision, increased braking and stopping power.



#### WIDE-ANGLE SLANT PATTERN BLOCK

Reduces tire deformation, enhances pattern blocks stiffness and optimizes braking performance.

### SUPERB STABILITY AT HIGH SPEEDS



#### SUPERB STABILITY AT HIGH SPEEDS

Specially designed compound mix for motorsports. Formulated to strike a balance between racetrack performance and everyday usability.

## TIRE SPECIFICATIONS

SIZE	SPEED RATING	LOAD INDEX	EU TIRE LABEL				
			RR	Wet Grip	Noise Db	Noise Grade	
18	255/35R18	W	94	E	C	72	B
	265/35R18	W	97	E	C	72	B
19	245/35R19	Y	93	E	C	72	C
	265/35R19	(Y)	98	E	C	72	B
	305/30R19	(Y)	102	E	C	74	B
	325/30R19	(Y)	101	E	C	74	B
20	265/35R20	(Y)	95	E	C	72	B
	295/30R20	(Y)	101	E	C	74	B