



SEDAN

ELECTRIC VEHICLE

GITICOMFORT SERIES

# GitiComfort F26

New-generation green and energy-efficient tire designed for new energy vehicles with high torque and heavy body

RIM SIZE

15 - 18"

ASPECT RATIO

60 - 70"

SPEED RATING

H - V



WET DRIVING SAFETY



COMFORTABLE AND QUIET DRIVE



ENERGY SAVING AND ENVIRONMENTALLY FRIENDLY



HIGH DURABILITY AND MILEAGE



## TIRE FEATURES

### QUIET AND SMOOTH



#### FLEXIBLE BELT NOISE REDUCTION TECHNOLOGY

Optimizes crown belt stiffness, improving driving comfort



#### MULTI-DIMENSIONAL NOISE-REDUCING TREAD PATTERN

Disperses sound energy, effectively enhancing ride comfort



#### VORTEX NOISE-CANCELING WALL TECHNOLOGY

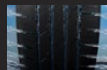
Reduces airflow pressure, lowering tire cavity noise

### WET ROAD SAFETY



#### ADAPTIVE GRIP TECHNOLOGY

Maximizes contact area, enhancing balanced grip response



#### NEW-GENERATION WATER-CHANNELING GROOVE DESIGN

Cuts through water films and rapidly drains water



#### HYDROPHILIC SILICA-BASED GRIP RUBBER

Offering shorter braking distances and safer performance in wet conditions

### LONG-LASTING DURABILITY



#### UPS GROUND STABILIZATION TECHNOLOGY

Ensures adaptive friction energy balance, reducing uneven wear and extending tire lifespan and mileage



#### HIGH-STRENGTH SKELETON STRUCTURE

Impact-resistant, high load-bearing capacity, and protective shield for greater safety

## TIRE SPECIFICATIONS

SIZE	SPEED RATING	LOAD INDEX	EU TIRE LABEL				
			RR	Wet Grip	Noise Db	Noise Grade	
15	195/60R15	H	92	C	A	69	A
	205/70R15	H	100	B	A	69	A
	165/65R15	H	85	C	A	68	A
16	205/60R16	V	96	C	A	69	A
18	215/60R18	V	102	B	A	69	A